



# FAILOVER AND LOAD BALANCING TECHNOLOGY

## Add Greater Reliability and Intelligent Traffic Management with Ecessa PowerLink™

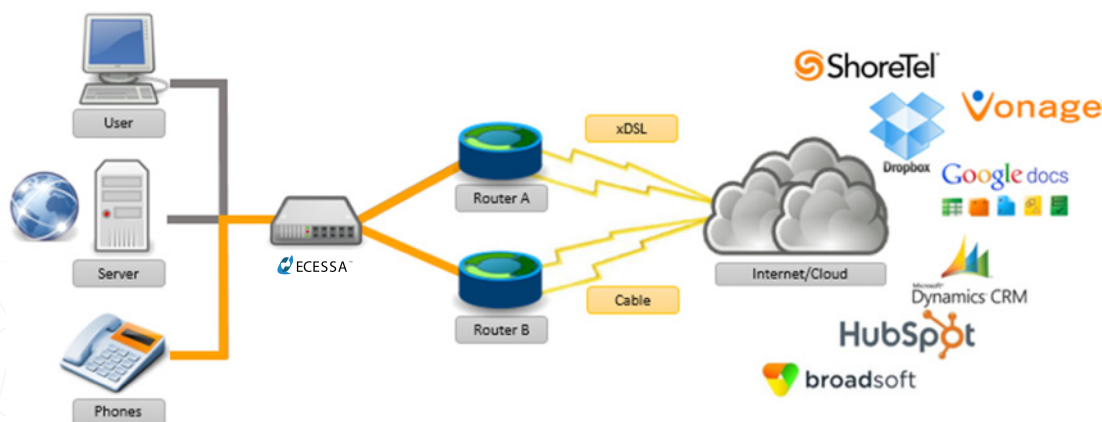
Ecessa PowerLink delivers failover and load balancing technology, providing greater reliability, bandwidth and redundancy to any network. By leveraging multiple connections (T1, xDSL, Cable, 3G/4G, Wireless, Satellite, etc.), Ecessa PowerLink provides reliable Internet access and VoIP performance. Ecessa PowerLink allows traffic to be deployed across multiple Internet and/or service provider networks for redundant link connectivity, delivering automatic real-time failover. This ensures VoIP calls sessions remain active, even in the case of a service provider outage.

PowerLink creates multi-homed networks of up to 25 WAN links to eliminate link congestion, providing full connectivity and continuous service. PowerLink uses intelligent outbound traffic management to load balance across all WAN links, and DNS to load balance inbound services. PowerLink also has basic firewall functionality and VPN capabilities in addition to a SIP Proxy, SIP Registration Server and NAT Proxy. This allows SIP traffic to be load balanced among network connections for the optimal call quality and constant VoIP uptime.

As your network bandwidth needs grow, PowerLink makes it easy to add more WAN links.

### PowerLink Benefits

- Access Control List (ACL)
- Automatic failover
- Built-in VPN support
- Definable in/out IP rules
- Load balance links and inbound services
- Quality of service and traffic shaping
- PCI compliant
- Seamless VoIP uptime
- SIP traffic load balancing
- Stateful, Layer 4 firewall



## Network Performance

Applications are coming from everywhere—the Cloud, SaaS, your data center or branch. PowerLink allows businesses to leverage their available circuits and aggregate bandwidth.

## Redundancy

Business can no longer afford to be down. PowerLink’s automatic link failover and traffic shaping guarantee availability and performance for applications sensitive to WAN link delays or failures.

## Expense Management

SD-WAN technology can leverage Internet broadband connections to augment or even replace more expensive solutions. PowerLink can help with that and may even allow the removal of expensive routing hardware.

## Network Management

SD-WAN technology can also make networks more manageable. PowerLink can be controlled through Ecessa Insight™ giving users the ability to actively manage and monitor their networks from anywhere.

## ECESSA DIFFERENCE

Ecessa has taken a crawl-walk-run approach to our entire product and service offering, allowing any organization to meet their technical and financial requirements. The products provide everything from basic failover to full data duplication in both physical and virtual formats. The approach allows customers of all sizes and industries to take a measured and methodical approach when deploying SD-WAN. Ecessa provides every business—at every stage and IT budget—with a smart, sustainable path forward towards a wider, more perfect network. And best of all, the platforms can be upgraded with a simple software download to include enhanced functionality.

- Ecessa Edge™ introduces your network to load balancing and in-call failover.
- PowerLink™ WAN link controllers add VPN and enhanced VoIP performance to your network.
- WANworX™ offers a full featured SD-WAN solution with a Never Down™ guarantee.

Comparison Chart	Ecessa Edge™	Ecessa PowerLink™	Ecessa WANworX™
Automatic Failover & Load Balance	✓	✓	✓
QOS (Quality of Service)	✓	✓	✓
Basic Firewall	✓	✓	✓
SIP Call Load Balance & Failover	✓	✓	✓
Authoritative DNS		✓	✓
Encryption (VPN's)		✓	✓
Multi-Site WAN Virtualization			✓
Virtual Instance			✓
WANworX Upgradeable	✓	✓	

## ECESSA Insight™

Functionality and flexibility in a modern network is a necessity for any organization. Ecessa Insight is our newest, most advanced platform designed to make deploying and maintaining Ecessa devices as simple as possible – anytime, from anywhere you can access the Internet. With Ecessa Insight you can monitor, manage and report on your WAN connectivity.

### PowerLink 150 and 350



### PowerLink 750



### PowerLink 1250 and 4000



### PowerLink 10G and 20G



	PowerLink150	PowerLink350	PowerLink750	PowerLink1250	PowerLink4000	PowerLink10G	PowerLink20G
Intelligent Load Balancing	Inbound & Outbound	Inbound & Outbound	Inbound & Outbound	Inbound & Outbound	Inbound & Outbound	Inbound & Outbound	Inbound & Outbound
WAN Link Redundancy (Automatic Fail-over and Fail-back)	✓	✓	✓	✓	✓	✓	✓
Redundant WAN Links Supported	Up to 3	Up to 15	Up to 15	Up to 25	Up to 25	Up to 25	Up to 25
Traffic Throughput	150 Mbps	350 Mbps	750 Mbps	1.25 Gbps	4 Gbps	10 Gbps	20 Gbps
Encrypted Throughput	75 Mbps	175 Mbps	375 Mbps	600 Mbps	2 Gbps	5 Gbps	10 Gbps
Interface Speeds	10/100/1000 (Ethernet)	10/100/1000 (Ethernet)	10/100/1000 (Ethernet)	10/100/1000 (Ethernet)	10/100/1000 (Ethernet) 10 Gbps (Fiber)	10/100/1000 (Ethernet) 10 Gbps (Fiber or Copper)	10/100/1000 (Ethernet) 10 Gbps (Fiber or Copper)
Number of Ports	6	6	6	6 or 10	8	8, 10 or 12	10, 12, 14, or 16
Wireless/3G/4G Compatible (Ethernet)	✓	✓	✓	✓	✓	✓	✓
Built-in Firewall	✓	✓	✓	✓	✓	✓	✓
SIP Proxy/SIP Registrar	✓	✓	✓	✓	✓	✓	✓
SIP In-Call Failover	Inbound & Outbound	Inbound & Outbound	Inbound & Outbound	Inbound & Outbound	Inbound & Outbound	Inbound & Outbound	Inbound & Outbound
Built-in VPN (IPsec & SSL)	✓	✓	✓	✓	✓	✓	✓
256-bit Encryption Engine	✓	✓	✓	✓	✓	✓	✓
Full Authoritative DNS Server	✓	✓	✓	✓	✓	✓	✓
Number of domain name entries	128	256	512	1024	1024	1024	1024
Number of hosts per domain	128	256	512	1024	1024	1024	1024
Full Mesh Network Routing	✓	✓	✓	✓	✓	✓	✓
QoS Traffic Management	✓	✓	✓	✓	✓	✓	✓
Event Reporting (SNMP, netflow)	✓	✓	✓	✓	✓	✓	✓
Remote Syslog Compatible	✓	✓	✓	✓	✓	✓	✓
Ecessa Insight Support	✓	✓	✓	✓	✓	✓	✓
High Availability (HA Support)	✓	✓	✓	✓	✓	✓	✓
Fail-to-Wire / Network Bypass	✓	✓	✓	✓	✓	✓	✓
Power	Adapter 100-240 Volt 50-60Hz. 36 Watts	Adapter 100-240 Volt 50-60Hz. 36 Watts	Integrated 100-240 Volt 50-60 Hz. 100 Watts	Integrated 100-240 Volt 50-60Hz. 220 Watts	Integrated 100-240 Volt 50-60Hz. 220 Watts	Integrated, Redundant, Hot Swappable 100-240 Volt 50-60 Hz. 300 Watts	Integrated, Redundant, Hot Swappable 100-240 Volt 50-60 Hz. 300 Watts
Form Factor	Desktop	Desktop	1U	1U	1U	1U	1U
Mounting Options	Rack Mount Kit	Rack Mount Kit	Rack Mount Kit	Rack Mount Kit and Rails	Rack Mount Kit and Rails	Rack Mount Kit and Rails	Rack Mount Kit and Rails
Physical Dimensions (WxDxH)	9.4"x6.5"x1.7"	9.4"x6.5"x1.7"	16.9"x12.0"x1.7"	16.9"x16.3"x1.7"	16.9"x16.3"x1.7"	17"x18.4"x1.7"	17"x18.4"x1.7"