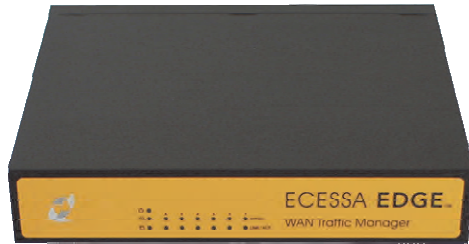


ECESSA EDGE™

QUICK START GUIDE

What's in the Box?

- Ecessa appliance
- Crossover cable
- Power cable
- Power supply
- Console cable
- Quick Start Guide
- Optional: mounting brackets



Crossover cable



Power cable



Power supply



Console cable



FIRST THINGS FIRST:

Fill Out The Pre-Configuration Guide



We know you're eager to get your Ecessa Edge up and running. First, you need to gather some network information. This is the only information you'll need to configure basic connectivity, and you can't move forward without it. The information for each connection is available from your service providers.

Your WAN connections are configured as either Static if your provider gives you a set address range, or Dynamic (Dynamic Host Control Protocol, or DHCP) if your provider assigns an address automatically. List any Static WANs first in the chart below. The static IP address must be "free" or "unassigned." If you do not have a "free" or "unassigned" static IP address, please go to info.ecessa.com/edge for configuration instructions.

For all connections, fill in Uplink (A) and Downlink (B) speeds in Mbps, shown below as "M." For Static connections, fill in Network information (C & D). For Dynamic (DHCP) connections, check the DHCP box; network information (C & D) is not required.

	Connection Speeds		D H C P	Network	
	A Uplink	B Downlink		C WAN IP and Subnet Mask	D Gateway IP Address
WAN1	M	M			
WAN2	M	M			
WAN3	M	M			

When this Pre-Configuration Guide is filled in, you're ready to install your Ecessa Edge!

Connect Power to Appliance and Access User Interface

2

Now that you've gathered the required network information, you're ready to start the Ecessa Edge configuration. Step one: connect to power and a PC or laptop.

- Plug power cable into power supply
- Plug power supply into Ecessa appliance

- Plug power cable into outlet
- Wait for startup "beep"

- Plug crossover cable into Ecessa appliance **MGMT/LAN Port 1**
- Plug crossover cable into PC/laptop
- Using a web browser, connect to: <http://192.168.50.1>
- Enter the login credentials Username: root Password: PWRLNK



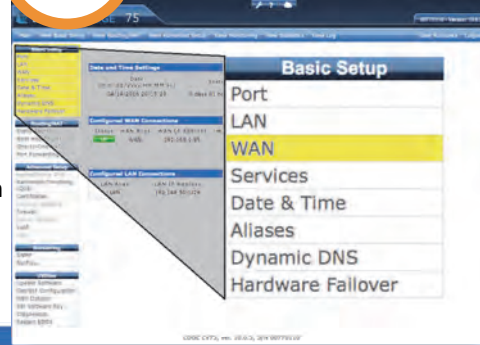
It's time to configure your first WAN - WAN1. Static WANs are configured a little differently than DHCP WANs. The following sections 3-4 will guide you through the process and will refer you back to the Pre-Configuration Guide for essential network information. You'll be glad you filled it out!

If you have a Static WAN, configure it as WAN1 – go to section 3. If your WANs are all Dynamic/DHCP - go to section 4. In section 5 we'll walk you through adding the rest of your WANs, and in section 6 we'll get everything connected and verified.

Configure WAN1 – Static IP

- Under Basic Setup, select “WAN”
- To configure WAN1 with a Static IP connection, delete the default DHCP WAN by selecting the checkbox next to that line then selecting “Delete Selected WAN.”
- Select “Add New WAN” and select “Translucent” for the WAN Type of WAN1. For Ethernet Port, select Physical_5, then assign a WAN Alias.
- Enter the WAN IP and Subnet Mask (C) and the Gateway IP Address (D) values, as well as the Uplink (A) and Downlink (B) Mbps speed values from the Pre-Configuration Guide.
- For this Translucent WAN1 connection, a LAN will be configured automatically on port Physical_6. Enter a LAN Alias for identification.
- When finished, select “Save Changes” and “Activate”

3



Base WAN Settings ?

WAN Type: Translucent | Ethernet Port: Physical_5 | WAN Alias: e.g. WAN

WAN Address Settings

WAN IP/Mask: e.g. 1.1.1.10 (C) | Gateway IP: e.g. (D)

Test Points and Link Settings

#	Test IP	Use ICMP	Use TCP	TCP Port	Time Out
1	8.8.4.4	<input checked="" type="radio"/>	<input type="radio"/>	80	1.00
2	4.2.2.2	<input checked="" type="radio"/>	<input type="radio"/>	80	1.00
3	208.67.220.220	<input checked="" type="radio"/>	<input type="radio"/>	80	1.00

Line Testing Responses / #Tests: 1 / 3

Uplink/Downlink: e.g. (A) / e.g. (B)

WAN Advanced Settings

MTU Settings: auto | 802.1q (VLAN) ID: | Spare Line: | No Outbound: | Disable Recovery:

Translucent LAN Settings

Auto Create LAN: | LAN Alias: e.g. LAN | LAN Ethernet Port: Physical_6

Activate: Save Changes:

Configure WAN1 - DHCP

4

- Under Basic Setup select “WAN”
- By default, a DHCP type WAN has already been created. Click on with the WAN name (“WAN”) to edit it.
- The type of this default WAN is set to DHCP and the Ethernet Port is set to Physical_5. The WAN Alias is set to “WAN.” You can leave these fields as is.
- Enter the Uplink (A) and Downlink (B) Mbps speed values assigned by your service provider
- When finished, select “Save Changes” and “Activate”

Base WAN Settings ?

WAN Type: DHCP | Ethernet Port: Physical_5 | WAN Alias: e.g. WAN

Test Points and Link Settings

#	Test IP	Use ICMP	Use TCP	TCP Port	Time Out
1	8.8.4.4	<input checked="" type="radio"/>	<input type="radio"/>	80	1.00
2	4.2.2.2	<input checked="" type="radio"/>	<input type="radio"/>	80	1.00
3	208.67.220.220	<input checked="" type="radio"/>	<input type="radio"/>	80	1.00

Line Testing Responses / #Tests: 1 / 3

Uplink/Downlink: e.g. (A) / e.g. (B)

WAN Advanced Settings

MTU Settings: auto | 802.1q (VLAN) ID: | Spare Line: | No Outbound: | Disable Recovery:

Activate: Save Changes:

Need help? See our instructional videos at info.ecessa.com/edge

Configure WAN2 and WAN3



Configuring your remaining WANs is similar to setting up WAN1, with a few notable differences as listed below.

- From the Basic Setup – WAN menu, select “Add New WAN” and then select the appropriate WAN Type, either “DHCP” or “Static.” [“Translucent” should only be used to configure the first static WAN.]
- Select the correct physical Ethernet port (Physical_3 or Physical_4). Each WAN connection must be on its own, unique physical port.
- Assign a WAN Alias for ease of identification.
- Enter the the Uplink (A) and Downlink (B) speed values from the Pre-Configuration Guide.
- For Static WANs, enter the WAN IP and Subnet Mask (C) and the Gateway IP Address (D) values from the Pre-Configuration Guide.
- When finished, select “Save Changes” and “Activate”

Base WAN Settings ?

WAN Type: DHCP
Ethernet Port: Physical_4
WAN Alias: WAN

Test Points and Link Settings

#	Test IP	Use ICMP	Use TCP	TCP Port	Time Out
1	8.8.4.4	<input checked="" type="radio"/>	<input type="radio"/>	80	1.00
2	4.2.2.3	<input checked="" type="radio"/>	<input type="radio"/>	80	1.00
3	204.117.214.10	<input checked="" type="radio"/>	<input type="radio"/>	80	1.00

Line Testing Responses / #Tests: 1 / 3

Uplink/Downlink: 1.50M (A) / 1.50M (B)

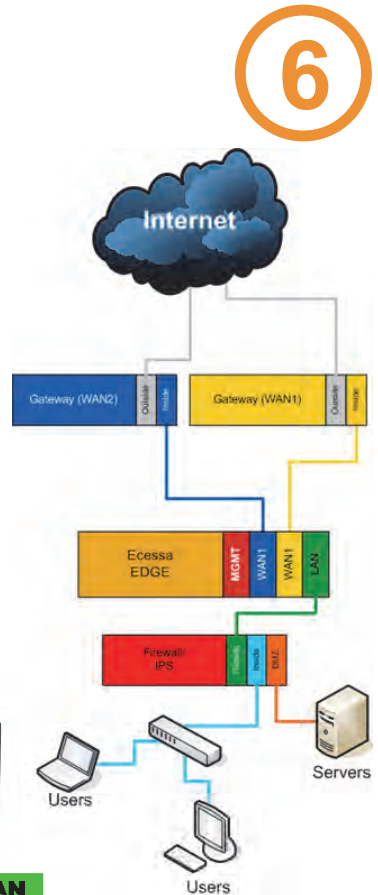
WAN Advanced Settings

MTU Settings: auto
802.1q (VLAN) ID:
Spare Line:
No Outbound:
Disable Recovery:

Connect ISPs and Test Basic Functionality

6

- Plug the ISP (WAN) connections and the LAN network connection(s) into the appropriate Ethernet ports.
- **IMPORTANT: Reboot neighboring devices in the network.**
- Once all devices are back up, confirm the following:
 - ✓ Visit Internet websites
 - ✓ Send and receive emails
 - ✓ Register your device online at www.ecessa.com/product-registration
- Optionally, test failover by unplugging an ISP connection and performing the tests listed above. Do this with each ISP, keeping at least one connection plugged in and active during each test.

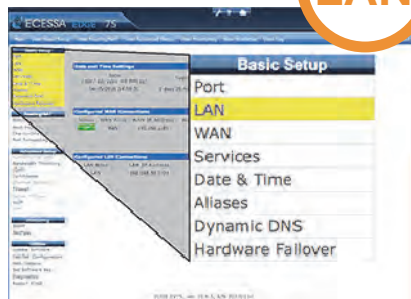


You're connected! The following sections cover some advanced features of Ecessa Edge that might be applicable to your network. For more information, articles, FAQs and instructional videos, please visit info.ecessa.com/edge

Configure LAN(s)

LAN

- Under Basic Setup, select “LAN”
- By default, a DHCP LAN is configured on Management Port 1
- If you configured WAN1 as translucent, a second LAN was automatically created (see section 4).
- To add an additional LAN, select “Add a new LAN”
- Assign a LAN Alias in field (A) – something that allows easy identification of the network
- Enter an appropriate LAN IP address and subnet mask in field (B). This address will be the default gateway for the devices on this LAN network
- Select the physical Ethernet port from menu (C). For the first LAN, this should be Physical_6. For additional LANs, this would likely be Physical_2
- When finished, select “Save Changes” and ”Activate”



Configure LAN (1 Entries) ?

Entry	LAN Alias	LAN IP Address	802.1q (VLAN) ID	Ethernet Port	Routed Via	DHCP	DMZ	Disable	
1	LAN (A)	192.168.50.1/24 (B)		Physical_6 (C)	Private	<input checked="" type="checkbox"/>	<input checked="" type="checkbox"/>	<input type="checkbox"/>	Delete

DHCP	Starting IP	Ending IP	DNS Nameserver(s)	Lease Time	Domain
<input checked="" type="checkbox"/>	192.168.50.100	192.168.50.150		7200	

Recursive Resolver [Advanced DHCP]

Add a new LAN

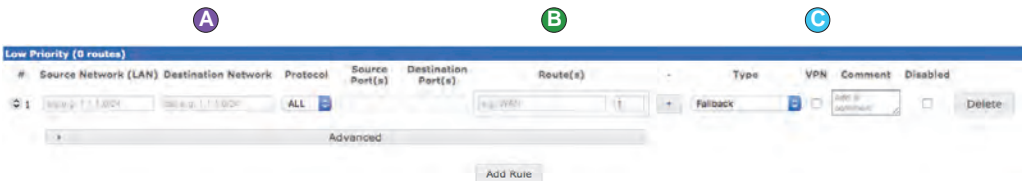
Save Changes

Advanced Features: Working with Site-to-Site VPNs



If you are using Site-to-Site (firewall-to-firewall) Virtual Private Networks (VPN), you may need to create a static route to ensure that it connects correctly. This will require the public peer address for the remote device.

- Under Routing/NAT, select “Static Routes”
- Under the Low Priority section select “Add Rule”
- Under “Destination Network” (A) add the remote peer IP address and subnet mask
- Under “Route(s)” (B) add the WAN alias of the preferred WAN
- Enable the VPN checkbox (C)
- When finished, select “Activate”



Need help? Check out our instructional videos at info.ecessa.com/edge

Advanced Features: VoIP, Quality of Service



Ecessa Edge is designed to act as a proxy for SIP calls. The VoIP proxy will rewrite headers so that providers see the public WAN addresses instead of the LAN IPs of the phones/PBX. The VoIP proxy also by default will attempt to failover calls it determines have issues whether that is due to traffic failure or other criteria. You can learn more about this advanced feature set at: <http://info.ecessa.com/edge/voip>

Ecessa Edge can also provide Quality of Service to identified traffic. This ensures lower latency and prioritization of important traffic, such as VoIP. Information about this feature can be found at: <http://info.ecessa.com/edge/qos>



Advanced Feature: Hardware Failover for Device Redundancy



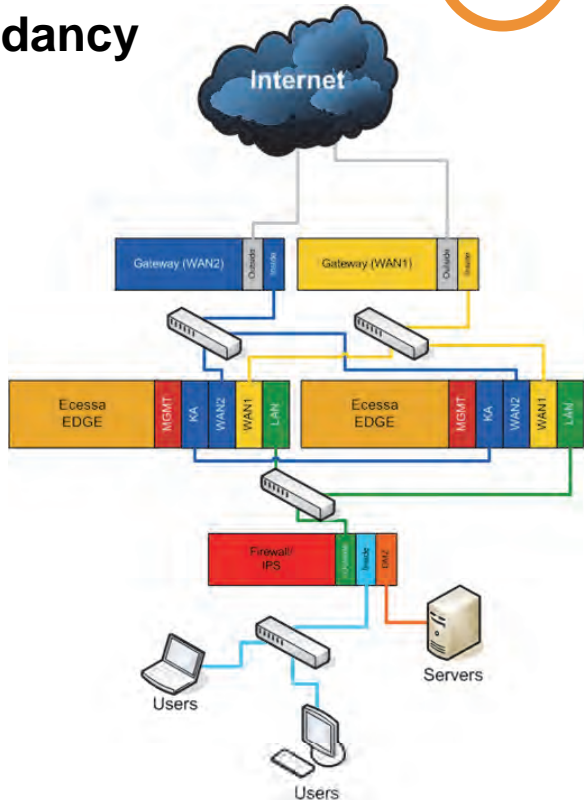
Hardware Failover allows a second unit to function in an idle role and act as a backup device in the event of failure or loss of connectivity on the active unit.

This is particularly useful in environments where any level of failure is unacceptable. This feature is also referred to as “high availability” or HA.

The two units are connected by a cable for heartbeat communication and should be given the same physical network connectivity so failover is automatic.

Information and instructions for configuring units for Hardware Failover can be found at:

<http://info.eccessa.com/edge/hwfo>



Technical Support



Each Ecessa Edge purchase includes unlimited access to our online knowledge base articles and one hour of technical support at no cost.

Support resources can be found here:

Web: <http://info.ecessa.com/edge>

Email: help@ecessa.com

Phone: 1-866-510-5562

Enhanced 24 x 7 technical support contracts are available for purchase. Please see your agent for details.

For information about Ecessa's full range of WAN solutions, please visit www.ecessa.com or call 800-669-6242.



7250 Metro Blvd, Suite 200 · Edina, MN 55439
Phone (763) 694-9949 · Toll Free (800) 669-6242
www.ecessa.com | info.ecessa.com/edge